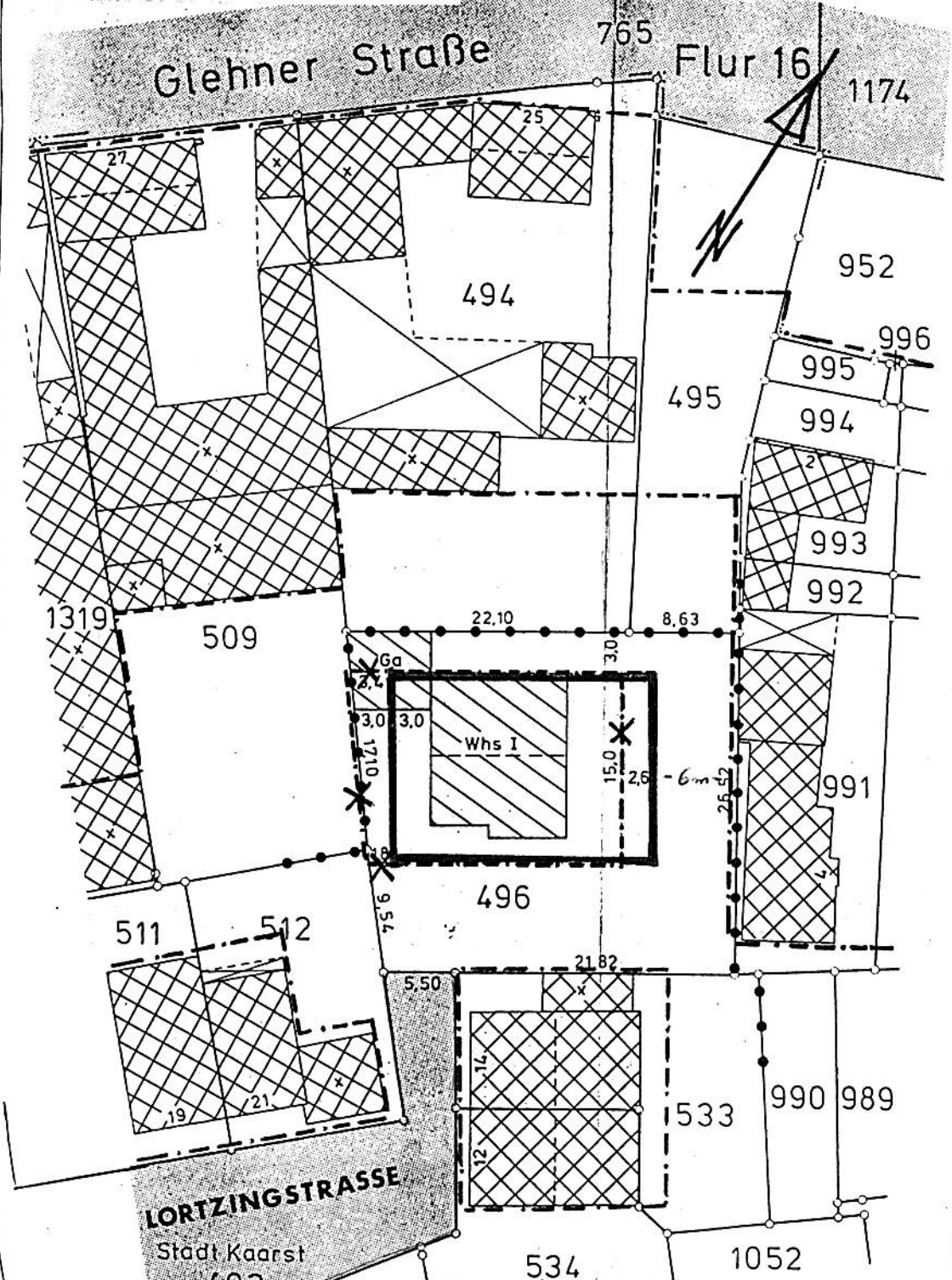


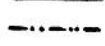

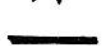


Auszug B-plan Nr. 26
Blatt 5 -Büttgen-



TEILGEBIET A13
WA I 0,4 (0,4)
DN 30-50°

-  gepl. Gebäude
-  vorh. Gebäude
-  vorh. Baugrenze
-  vorh. Baugrenze (entfällt)
-  gepl. Baugrenze

Erhöhung von 0,4 auf 0,5